

MONTHLY MEMBERSHIP PROGRESS REPORT

District 202 M

Results as of: 6/30/2020

GMT:

LOCATION NEW ZEALAND

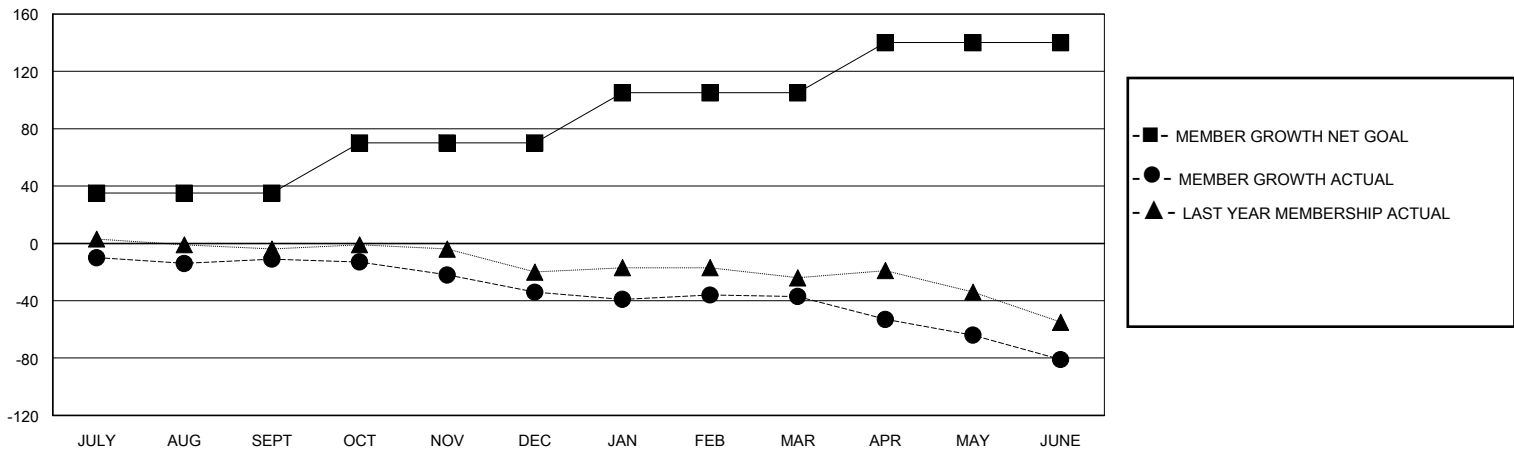
GMT CA

| Clubs | | | | Members | | | |
|-----------------------|---------------|-----------|---------------|-----------------------|------------------------|----------------------|--|
| RESULTS FOR 2019-2020 | | | | RESULTS FOR 2019-2020 | | | |
| QUARTER | NEW CLUB GOAL | NEW CLUBS | DROPPED CLUBS | QUARTER | MEMBER GROWTH NET GOAL | MEMBER GROWTH ACTUAL | DROPPED MEMBERS ACTUAL (including transfers) |
| JULY/AUG/SEPT | 0 | 0 | 0 | JULY/AUG/SEPT | 35 | 13 | 22 |
| OCT/NOV/DEC | 0 | 0 | 0 | OCT/NOV/DEC | 35 | 9 | 31 |
| JAN/FEB/MAR | 0 | 0 | 0 | JAN/FEB/MAR | 35 | 11 | 14 |
| APR/MAY/JUNE | 0 | 0 | 0 | APR/MAY/JUNE | 35 | 2 | 45 |

GOALS AND ACTUAL NEW CLUBS CUMULATIVE



GOALS AND ACTUAL MEMBERS CUMULATIVE



| | | |
|--|---|--|
| DROPPED CLUBS: 0 | 21 CLUBS OF 47 ADDED 1 OR MORE NEW MEMBERS | GENDER DISTRIBUTION MALE 673 (64.40%) FEMALE 372 (35.60%) |
| DROPPED MEMBERS DECEASED 19 CLUB CANCELLED 0 OTHER 93 TOTAL 112 | CLICK HERE FOR CUMULATIVE MEMBERSHIP DATA | TOTAL FAMILY UNIT MEMBERS 114 FAMILY MEMBERS PAYING HALF DUES 58 |